



Clermont Garden Club Newsletter

April 2020

page 1

These are truly strange times!

Happy Spring everyone. What a crazy spring we've had with the COVID-19 virus. I hope everyone is keeping safe and healthy. Let's hope that this will pass soon, and we can continue with our normal lives. This surely is a time for reflection and appreciation for the people and things we care about.

Be sure to read all the emails from our corresponding secretary, Tina Worrell, to stay updated on club news. Working in the club gardens continue...it's easy to practice social distancing in our gardens. If you need a change of scenery, come due some weeding! Cindy

It's that time again...**MEMBERSHIP DUES!**...Are Yours Late?

Payment for membership is due for the 2020-2021 year.

Your check must be mailed to PO Box 121322, Clermont, FL 34712-1322

According to our by-laws, dues should be paid as follows:

- Annual dues for active members...\$40.00
- Annual dues for associate members...\$48.00
- Couples/Family...\$45.00
- FFGC Life Member...\$28.00
- Honorary Member...\$0.00

Make checks payable to "**Clermont Garden Club**"

Of the dues each member pays, \$12.00 dues goes to FFGC, except for FFGC Life Members.

Did you realize that you are a member of **the largest volunteer** garden club organization in the world? Wow! Pat yourself on the back because you have access to "Digging It" courses, floral design study classes, landscape design, master gardener classes and MORE!

Thank you for your continued support and membership to our club!



Clermont Garden Club Newsletter

April 2020

page 2

Caladium Sales

Due to the “Stay at Home” recommendations, the public sale of caladium bulbs has been suspended until further notice.

There are three varieties available this year – red, pink and white. They are packaged 6 bulbs per bag. Each bag is priced at \$5.00. Now buy 4 bags, get one free.

Please contact Barbara Williams to arrange to purchase bulbs:
wmsbarbara@yahoo.com or 352-394-3954

Cash or Check accepted. (Checks made
Payable to “Clermont Garden Club.”)



“Aaron” – White



“Rosebud” – Pink



“Fla. Cardinal” – Red

E-mail!

Emails from Tina

Many notices via e-mail are sent out every month. We want to be sure you know what is happening. If you are unable to open or read the emails, please let Tina Worrell know either by phone 352-243-4035 or grammytina9@gmail.com. Thanks, Tina



And coming in May - Fun with Flowers – Saturday, May16 – at the Clubhouse

Join Leslie Thomas, owner of The Seaside Succulent, to create a beautiful galvanized tin container filled with colorful succulents. Perfect for a porch, patio or windowsill! Workshop will include tons of succulent growth & propagation tips and all materials and instruction by Leslie.

Time: 11 am – 12:30 pm
Cost: \$25 (20% will go to our Club)

The date was changed from 4/4 and all who signed up were notified via email. A few cancelled for the new date. If we must change the date again, notifications will be made.

As of this writing, there are 4 spots open.

Here's the link <https://clermontgardenclub.eventbrite.com>.

You are signing up via the Eventbrite website and the information goes to Leslie Thomas. Please contact Cindy Simon with any questions: bsktcindy@earthlink.net.



End of Year Luncheon – May 20?



An update will be sent in early May on the date of our end of year luncheon.

If we can't have it May 20 please reserve the third Wednesday of June, July and August for it and we will have it one of those, dates if possible.

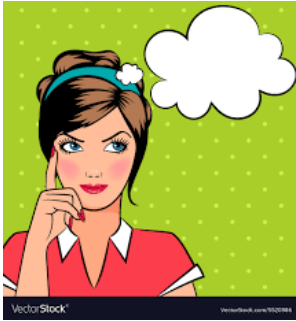


Clermont Garden Club Newsletter

April 2020

page 4

CLERMONT GARDEN CLUB PLANNING - April 2020 WE NEED TO HEAR FROM YOU!!



Dear Clermont Garden Club Members:

We are beginning the planning process for the 2020-2021 program year which starts June 1, 2020, and ends May 31, 2021, and we would love to hear your ideas. Please respond to this survey as soon as possible to help us gather your suggestions. Responses should be sent to the person indicated below for each item. Thank you in advance. We look forward to hearing from you.

Marilyn Paone, President

SOCIAL TIME FOR MEETINGS - Our general meetings currently are held from 10:00 a.m. until noon. We try to keep the business meeting as short as possible to allow time for plant education, a social break, and a program. However, the social time frequently is only 15-20 minutes for us to include everything within the two hours available. We are considering increasing the time provided for social time.

Please notify Marilyn Paone at m.paone@icloud.com if you are in favor of:

Option 1 - Have food and beverages available at 9:30 so members who wish to enjoy more social time would have an extra 1/2 hour before the regular meeting starts. If we did this, we probably would shorten the social break normally held between the meeting and the program.

Option 2 - Continue as we have been doing by starting at 10:00 a.m. and having the social time be 15-20 minutes between the business meeting and the program.

Option 3 - Other - if you have another suggestion please provide it to Marilyn via e-mail.

PROGRAMS AND FIELD TRIPS - Please provide any suggestions that you have for programs and field trips to Sandi Eckstein, 1st Vice President and Program Chairman, at gtesse@aol.com. Provide as much detail as possible so that Sandi can follow up on your suggestions.

FUND RAISERS - Please provide your suggestions for fund raisers to Cindy Simon, Chairman of the Ways and Means Committee, at bsktcindy@earthlink.net. Our largest fund raisers will be the Garden Walk on November 7, 2020, and a Spring Garden Festival in May 2021 plus we will have other smaller activities such as the sale of caladium bulbs and Fun with Flowers.

PROJECTS - Your suggestions for additional projects should be provided to m.paone@icloud.com. Projects are things that we do to advocate gardening and promote an interest in gardening to the public even though the projects do not produce income for us. We currently provide a plant to the Library and a plant to City Hall, select and advertise a Yard of the Month, work with the East Ridge High School Garden Club, and provide sponsorships for students to attend SEEK (the Save Earth's Environment Through Knowledge conference) and Wekiva Youth Camp.



Clermont Garden Club Newsletter

April 2020

page 5



Recently our members were provided a tour of the new native plant and tree areas which have been added to our clubhouse grounds. The native plant area is close to the gazebo and the native trees, along with some native and non-native plants, are behind the clubhouse in the backyard. If you weren't available for the tour at our February meeting please wander the gardens any time you have the opportunity.

Many members were involved in helping with this major project and we all want to give them a huge THANK YOU. Those members are:

Jim Lobb - Donated over \$1,500 worth of trees and plants from his personal yard. He also:
- prepared the plan (with additional guidance from **Chickie Broman** and others)
for where the plants and trees would be planted on the clubhouse grounds.
- hired a gentleman to dig them up from his yard and transport them to ours.
- planted many of the trees.
- set up a mini-irrigation system for the plants by the gazebo.
- continually oversees both areas.

Pat Richardson - As grounds chairman Pat has been heavily involved in the entire endeavor, from making suggestions regarding the plan to helping with the plantings, laying down cardboard and mulch, and keeping the new trees watered until they become established.

Lin-Lin Lin - provided a \$1,500 donation to our Memorial Fund in memory of her mother and designated that it be used for us to extend our irrigation system to the back part of our property and other things needed for the project.

Linda Lauletta - has taken on the job of edging the new beds.

Cindy Simon along with **Jim Lobb** - traveled to a nursery to purchase some non-native plants.

Donna Kozick - provided help with planting.

All Members Shown Above have helped with planting, laying down cardboard and covering it with mulch, weed control, and daily watering of the new beds until the plants are established.

**MANY THANKS TO ALL WHO HELPED!
MARILYN PAONE, PRESIDENT**



April in the Garden



Florida generally sees highs in the 80s F and lows in the 50s F in April. The number of rainy days ranges from about four to seven.

- Prune flowering shrubs after they are done blooming.
- Practice grasshopper and mosquito control.
- Mulch around plants as needed, especially around trees and shrubs.
- Water your plants during dry spells.
- Transplant container-grown fruit trees and nut trees.
- Inspect citrus trees for citrus-leaf miner, aphids, scale, and other pests. Spray with Neem oil as needed.



Clermont Garden Club Newsletter

April 2020

page 7

Garden Workdays at the Clubhouse

We start @ 8 am and go until @ noon

ALL are welcome and NEEDED! Bring your gloves, bug spray, clippers, etc.

Garden Workdays

Monday, April 13

Monday, April 27

Monday, May 11



Library Plant, City Hall Plant & Yard of the Month

These three activities have been suspended until further notice.



April Babies!

Lori Toth 4/5

Tina Worrell 4/15

Chickie Broman 4/27

Pat Richardson 4/27